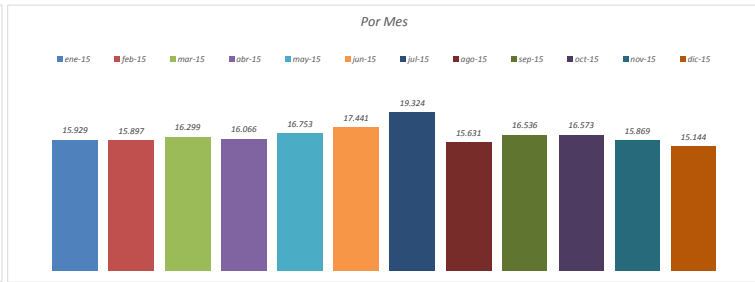
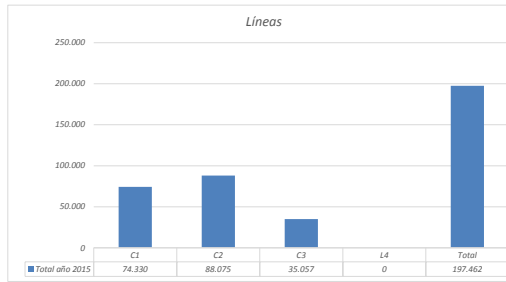


Viajeros por tipo servicio urbano de Parla año 2015

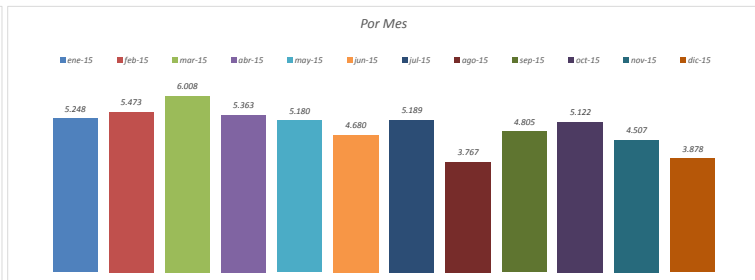
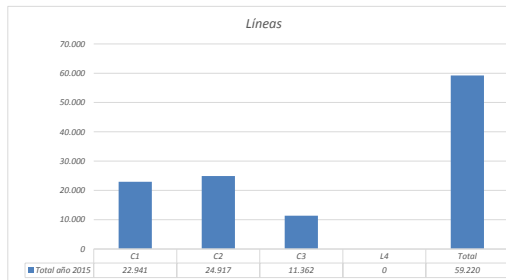
Billete sencillo

Línea	ene-15	feb-15	mar-15	abr-15	may-15	jun-15	jul-15	ago-15	sep-15	oct-15	nov-15	dic-15	Total año 2015
C1	6.014	5.838	6.063	6.288	6.340	6.536	7.300	5.758	6.217	6.442	5.930	5.604	74.330
C2	7.132	7.337	7.363	7.099	7.437	7.907	8.383	7.036	7.243	7.135	7.109	6.894	88.075
C3	2.783	2.722	2.873	2.679	2.976	2.998	3.641	2.837	3.076	2.996	2.830	2.646	35.057
L4													0
Total	15.929	15.897	16.299	16.066	16.753	17.441	19.324	15.631	16.536	16.573	15.869	15.144	197.462



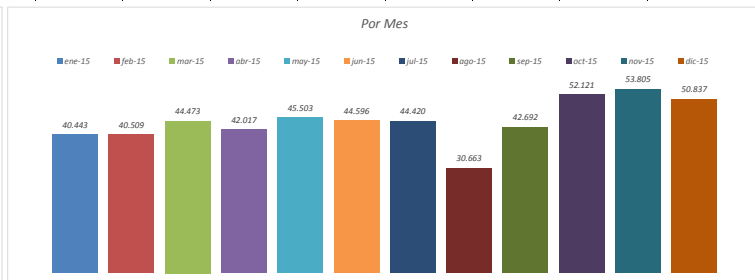
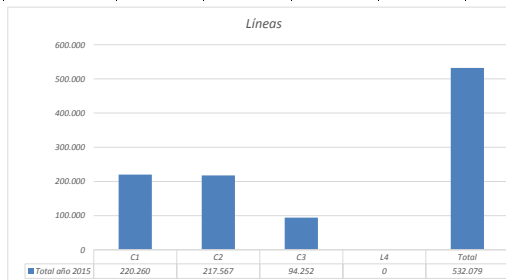
Bonobus

Línea	ene-15	feb-15	mar-15	abr-15	may-15	jun-15	jul-15	ago-15	sep-15	oct-15	nov-15	dic-15	Total año 2015
C1	2.132	2.143	2.369	2.012	2.133	1.765	2.069	1.545	1.909	1.990	1.573	1.301	22.941
C2	2.180	2.459	2.642	2.456	2.128	2.025	2.138	1.579	1.812	2.018	1.857	1.623	24.917
C3	936	871	997	895	919	890	982	643	1.084	1.114	1.077	954	11.362
L4													0
Total	5.248	5.473	6.008	5.363	5.180	4.680	5.189	3.767	4.805	5.122	4.507	3.878	59.220



Abono transportes

Línea	ene-15	feb-15	mar-15	abr-15	may-15	jun-15	jul-15	ago-15	sep-15	oct-15	nov-15	dic-15	Total año 2015
C1	17.601	16.761	18.639	17.638	18.417	18.658	18.322	12.395	17.850	21.433	21.956	20.590	220.260
C2	16.274	16.799	18.170	17.007	18.745	18.312	17.946	13.005	17.289	21.134	21.919	20.967	217.567
C3	6.568	6.949	7.664	7.372	8.341	7.626	8.152	5.263	7.553	9.554	9.930	9.280	94.252
L4													0
Total	40.443	40.509	44.473	42.017	45.503	44.596	44.420	30.663	42.692	52.121	53.805	50.837	532.079



Pases

Línea	ene-15	feb-15	mar-15	abr-15	may-15	jun-15	jul-15	ago-15	sep-15	oct-15	nov-15	dic-15	Total año 2015
C1	8.226	6.621	8.482	8.265	9.628	9.319	8.675	6.849	8.998	10.394	10.133	8.972	104.562
C2	9.163	9.388	8.923	8.611	10.368	9.843	8.755	7.129	9.424	11.217	11.023	9.815	113.659
C3	3.698	3.471	3.382	3.493	4.803	3.910	3.634	2.518	3.496	4.194	3.938	3.462	43.999
L4													0
Total	21.087	19.480	20.787	20.369	24.799	23.072	21.064	16.496	21.918	25.805	25.094	22.249	262.220

